

2003 Blizzard

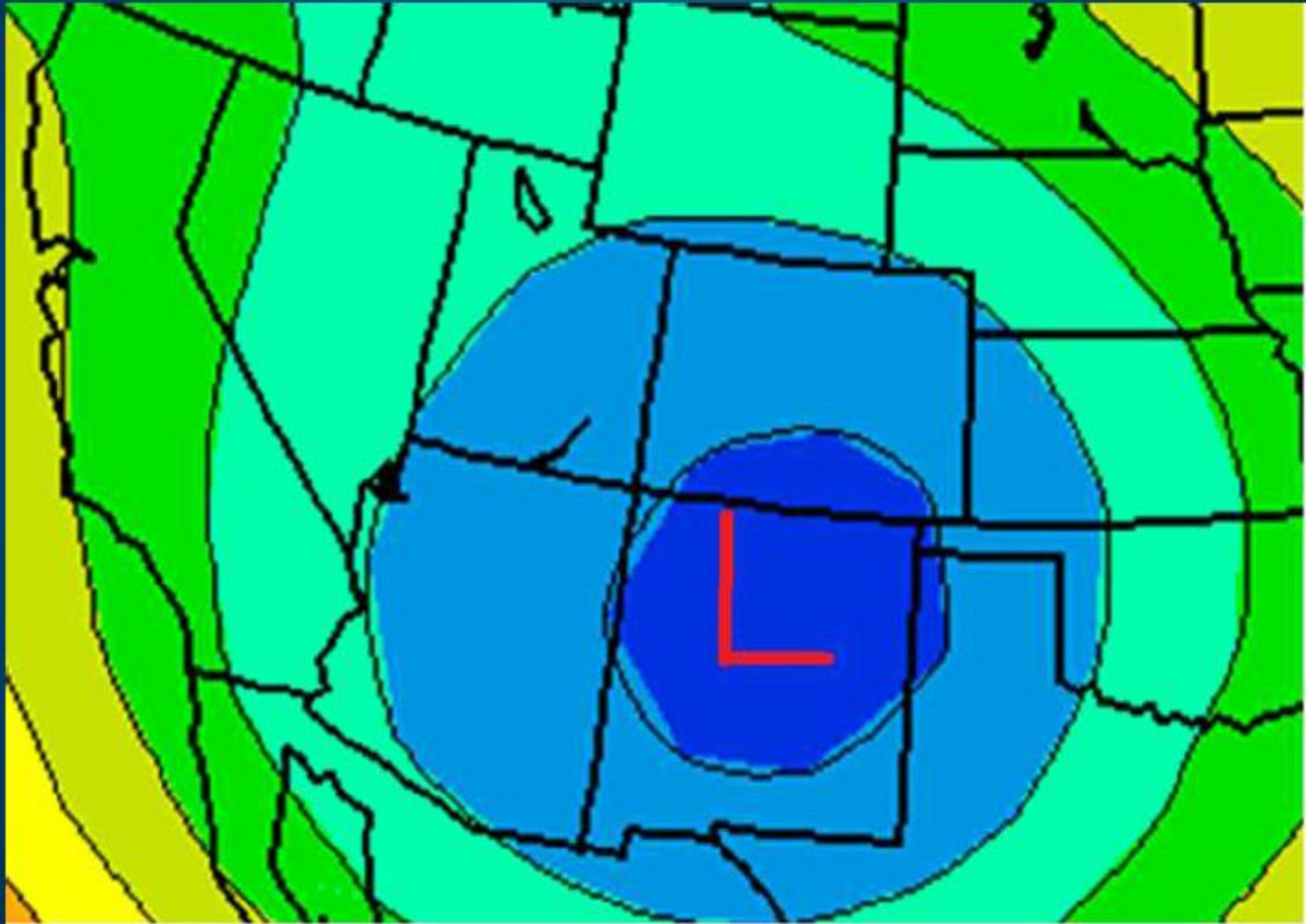
- In 2003, one of the worst blizzards since historic records began in 1872 struck metro Denver with a vengeance.
- Heavy wet snow accumulating to around 3 feet in the city and to more than 7 feet in the foothills brought transportation to a near standstill.
- The heavy wet snow caused roofs of homes and businesses to collapse. The snow also downed trees, branches, and power lines.
- North winds sustained to 30 mph with gusts as high as 41 mph produced drifts to 6 feet in parts of the Denver Metro area.
- In Denver alone at least 258 structures were damaged. Up to 135,000 people lost power during the storm, and it took several days for power to be restored in some areas.



Denver

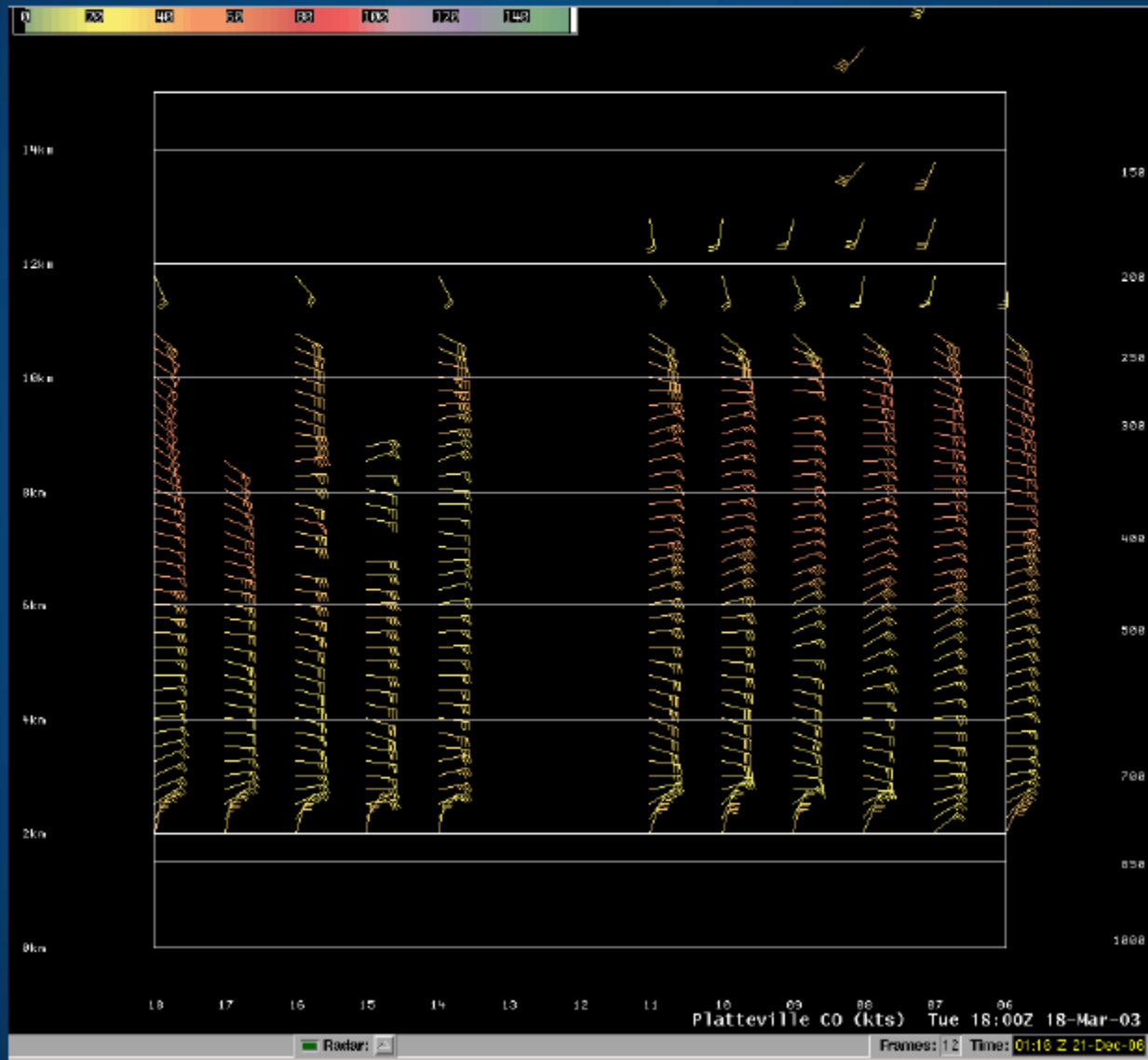


Storm Center on March 18, 2003





Profiler
from
Platteville
CO,
showing
deep and
strong
easterly
upslope
winds
created by
deep and
powerful
storm to
our South





3/20/2003

Location: Parker, CO Description: plowing our driveway to the road



3/20/2003

Location: Parker, CO

Description: digging out tractors



3/20/2003
Location: Parker, CO Description: Driveway plowed;



Date: 3/20/2003
Location; Parker, CO Description: plowing Roads for subdivision



Snow Totals ski areas



Snow Report



Report Last Updated 3/20/03 9:39 AM

ELDORA REMAINS CLOSED TODAY, due to access to the resort. We anticipate opening tomorrow (Friday)

New snow since
3/20/03 6:08 AM: 8.0 inches

New snow in the
last 24 hours: 8.0 inches

New snow in the
last 48 hours: 43.0 inches

New snow in the
last 72 hours: 69.0 inches

Loveland Ski Area

in Info Tickets Shops Ski And Snowboard Schools Group Other Info Contact Us

ized snow reports and special offers and you'll be automatically registered to win a 2002

Date	Snow Total (inches)
11- Mar	0
12- Mar	1
13- Mar	0
14- Mar	0
15- Mar	0
16- Mar	0
17- Mar	0
18- Mar	5
19- Mar	34
20- Mar	37

(L. Dennis 20 days U.S. Ski & Snowboard)

WINTER PARK RESORT

COLORADO'S FAVORITE

MOUNTAIN 800-979-0332 SEARCH

Snow, Conditions, & Trail Report

Current Conditions updated 03/20/2003 at 15:22:57

Lifts Open: 12	Summit Depth: 126" (325 cm)
Trails Open: 89	Mid-Mountain Depth: 120" (305 cm)
New Snow in Last 24 hrs: 9.5" (24 cm)	Village Temperature: 30°F (-1°C)
New Snow in Last 48 hrs: 53" (135 cm)	Summit Temperature: 23°F (-5°C)
New Snow in Last 72 hrs: 71" (180 cm)	Wind: NWN 0 to 15mph
Season-to-Date Snowfall: 350.2" (890 cm)	Sky: Partly Cloudy
	Conditions: Powder

[View 6 day weather forecast](#)

MyWinterPark.com

- Crippled travel – local and interstate highways closed
- Denver International Airport was closed, stranding about 4,000 travelers. The weight of the heavy snow caused a 40-foot gash in a portion of the tent roof, forcing the evacuation of that section of the main terminal building.
- Avalanches in the mountains and foothills closed many roads including I-70, stranding hundreds of skiers and travelers.
- Several residences between Bakerville and Silver Plume were evacuated because of the high avalanche danger.
- The heavy snow trapped thousands of residents in their foothills homes in Jefferson county for several days.
- The storm officially dumped 31.8 inches of snow at the site of the former Stapleton International Airport, the most snowfall from a single storm since the all-time record snowfall of 37.5 inches on December 4-5, 1913.



The Top 10 Snowstorms

(historical perspective)

Date	Denver Totals
Dec 1-5, 1913	45.7"
Mar 17-19, 2003	31.8"
Nov 2-4, 1946	30.4"
Dec 24, 1982	23.8"
Apr 21-23, 1885	23.0"
Oct 20-23, 1906	22.7"
Oct 24-25, 1997	21.9"
Nov 26-27, 1983	21.5"
Dec 20-21, 2006	20.7"
Jan 29-31, 1883	19.3"



Westminster



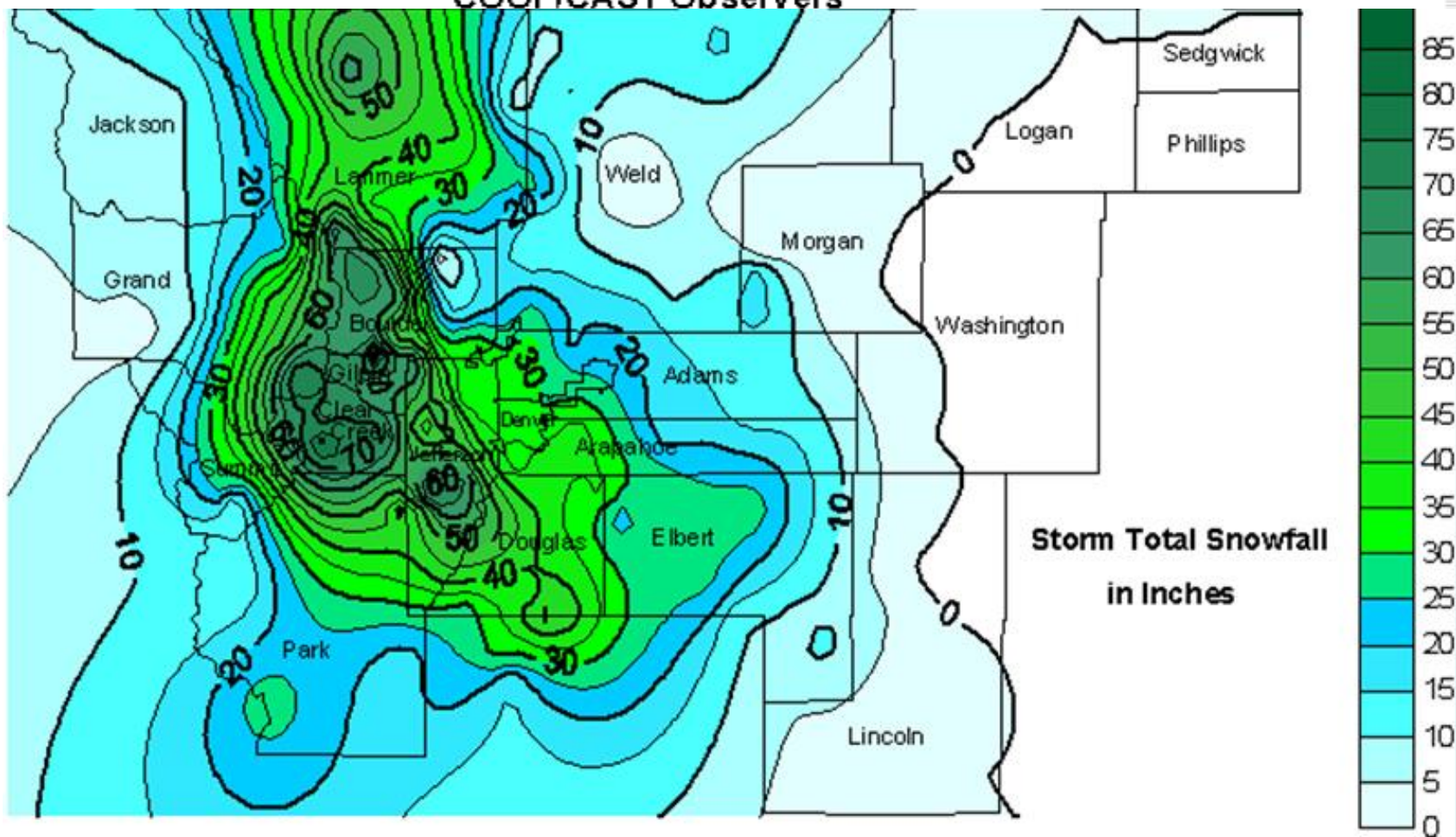


Snow Totals



March 17-20, 2003 Storm Totals

COOP/CAST Observers



The storm was a drought-buster, breaking 19 consecutive months of below normal precipitation in the city. Snowfall across metro Denver and in Fort Collins ranged from 2 feet to more than 3 feet. The highest amounts included

- 40 inches in Aurora,
- 38 inches in Centennial and 6 miles east of Parker,
- 37 inches at Buckley AFB,
- 35 inches in southwest Denver,
- 34 inches in Louisville,
- 32 inches in Arvada,
- 31 inches in Broomfield and Westminster,
- 22.5 inches in Boulder

In the foothills, snowfall ranged from 3 feet to more than 7 feet. Some of the most impressive storm totals included

- 87.5 inches atop Fritz Peak and in Rollinsville,
- 83 inches at Cabin Creek, 74 inches near Bergen Park,
- 73 inches northwest of Evergreen,
- 72 inches in Coal Creek Canyon,
- 70 inches at Georgetown,
- 63 inches near Jamestown,
- 60 inches near Blackhawk,
- 55 inches at Eldora Ski Area,
- 54 inches 8 miles west of Sedalia

Locations from east of Greeley to Limon received almost all rain from this event, with rainfall amounts ranging from 1 to 2.5 inches.

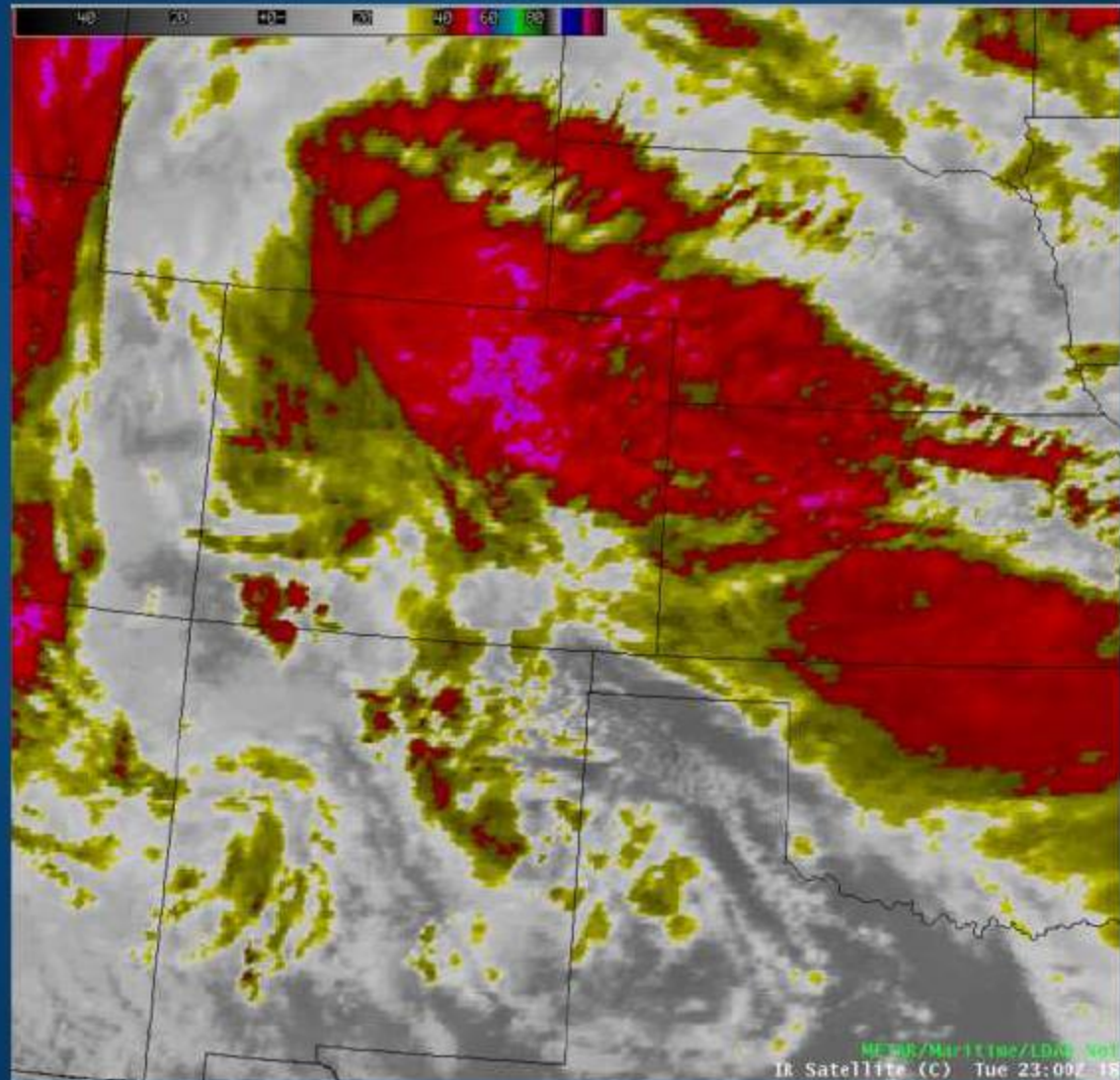


Coal Creek Canyon





Tuesday,
March 18,
2003
satellite
imagery.
Note:
Deep
plume of
gulf
moisture
streaming
into
Colorado
from the
Southeast





Broomfield



East Boulder:

